

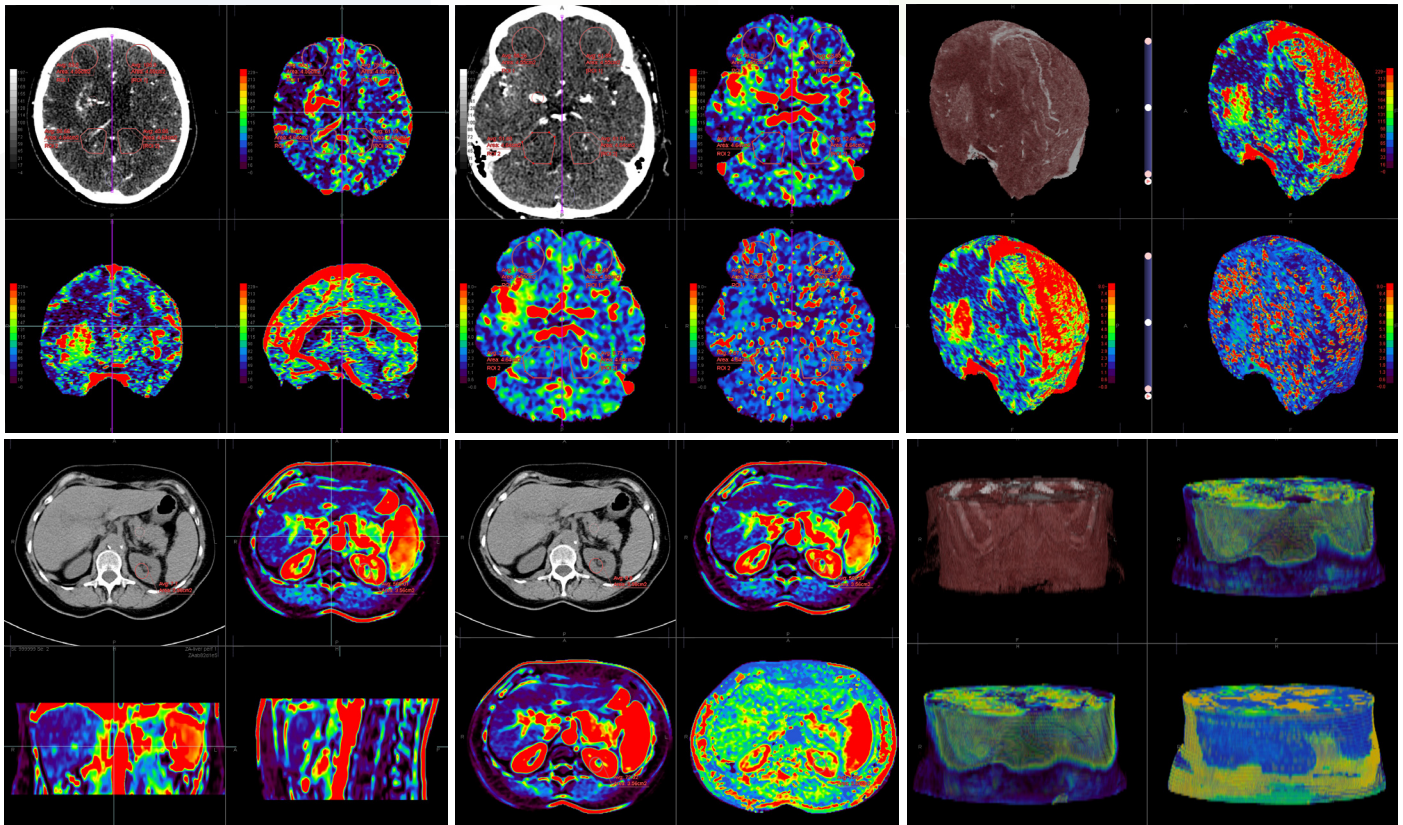
CT Volume Perfusion

COLOR MAPS RENDERED IN SLICES OR VR IMAGES

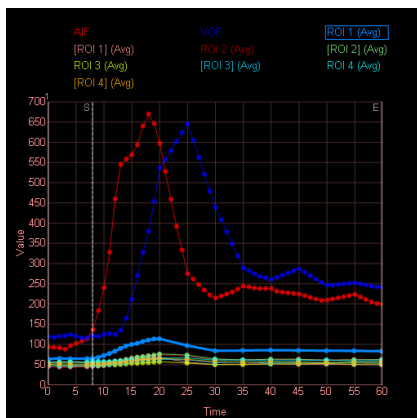
Analyze full volumetric CT data for standard perfusion indices, using several algorithms to view three maps at a time. Single Compartment method (with Fv, Tau and R2 maps) is available for use in the torso, and standard and block-circulant methods (with BF, BV, MTT and Tmax maps) are available for brain studies.

Key features:

- Automated or manual AIF / VOF identification and selection
- Calculations complete within seconds
- Coronal, Sagittal, Axial or MPR presentation selectable
- Volume rendered data presentation with oblique cut planes
- Multiple algorithms available for use



View a single map in ACS views, multiple maps in the same slice or VR images.



| ROI (Area) | Image | Average | SD | Max | Min |
|---------------------|----------|---------|-------|--------|------|
| ROI 1 (455.08) | Original | 55.26 | 17.93 | 122 | -2 |
| | BF_sSVD | 43.57 | 25.85 | 127.63 | 0 |
| | BV_sSVD | 1.32 | 0.85 | 4.88 | 0.47 |
| | MTT_sSVD | 6.02 | 6.13 | 25 | 1.29 |
| [ROI 1] (455.08) | Original | 61.88 | 17.89 | 132 | 8 |
| | BF_sSVD | 63.05 | 32 | 232.98 | 6.08 |
| | BV_sSVD | 2.49 | 1.24 | 7.8 | 0.88 |
| | MTT_sSVD | 3.32 | 2.73 | 19.56 | 1.09 |
| ROI 2 (464.23) | Original | 51.83 | 21.03 | 128 | -18 |
| | BF_sSVD | 63.43 | 28.16 | 162.07 | 2.03 |
| | BV_sSVD | 2.6 | 0.81 | 5.77 | 0.91 |
| | MTT_sSVD | 4.67 | 4.66 | 25 | 1.18 |
| [ROI 2] (464.23) | Original | 61.91 | 28.33 | 247 | -8 |
| | BF_sSVD | 92.46 | 70.29 | 470 | 4.05 |
| | BV_sSVD | 3.72 | 2.66 | 14.52 | 0.88 |
| | MTT_sSVD | 3.52 | 3.5 | 25 | 1.15 |

Japan Office

1-4-28 Mita, Minato-ku, Tokyo, 1080073, Japan
Tel: +81 3 5427 1903 <http://www.zio.co.jp>

US Office

1301 Shoreway Road, #325, Belmont, CA 94002-4105, USA
Tel: +1 650 413 1300 <http://www.ziosoftinc.com>